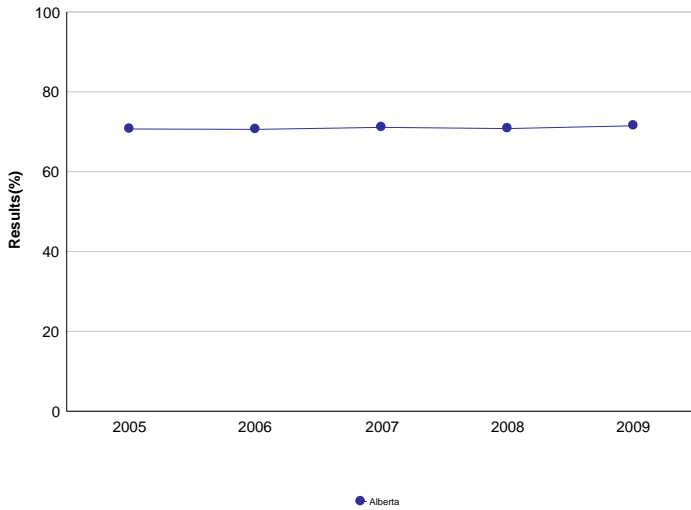


High School Completion Rates - Measure History

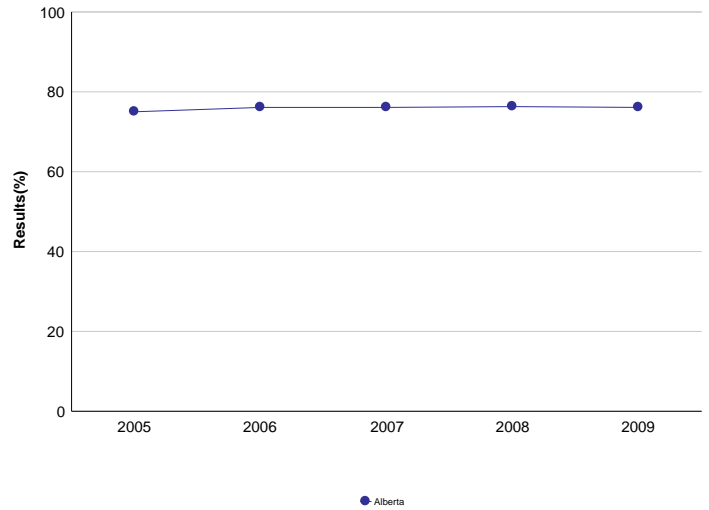
Province: Alberta

	Alberta									
	2005		2006		2007		2008		2009	
	N	%	N	%	N	%	N	%	N	%
3 Year Completion	42,952	70.7	43,876	70.6	44,620	71.1	45,381	70.8	45,286	71.5
4 Year Completion	43,119	75.0	42,935	76.1	43,856	76.1	44,600	76.3	45,369	76.1
5 Year Completion	43,235	77.0	43,098	78.1	42,900	78.9	43,845	78.7	44,565	79.0

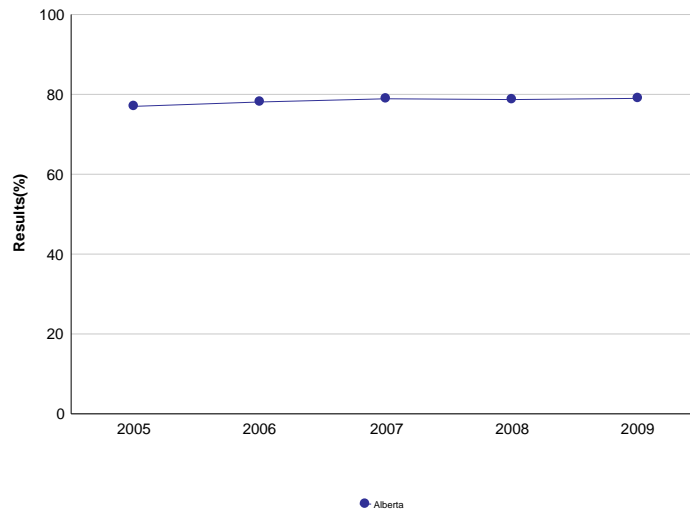
3 Year Completion (%)



4 Year Completion (%)



5 Year Completion (%)



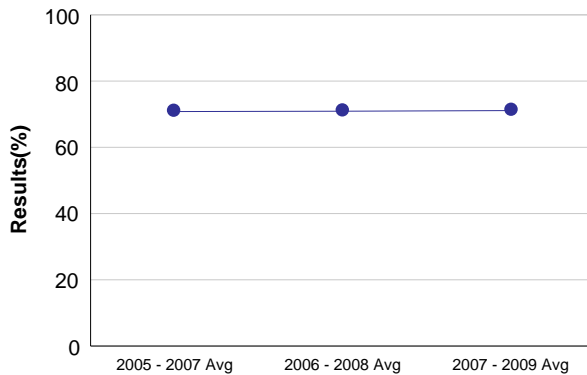
Note: Data values have been suppressed where the number of students is less than 6. Suppression is marked with an asterisk (*).

High School Completion Rates - 3 Year Rolling Average

Province: Alberta

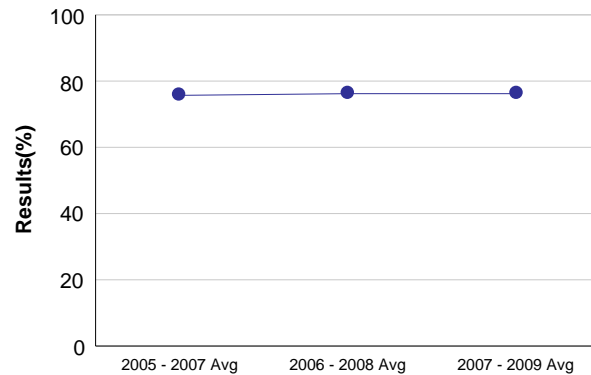
	Alberta					
	2005 - 2007 Avg		2006 - 2008 Avg		2007 - 2009 Avg	
	N	%	N	%	N	%
3 Year Completion	43,816	70.8	44,626	70.9	45,096	71.1
4 Year Completion	43,303	75.7	43,797	76.2	44,608	76.2
5 Year Completion	43,078	78.0	43,281	78.6	43,770	78.9

3 Year Completion (%)



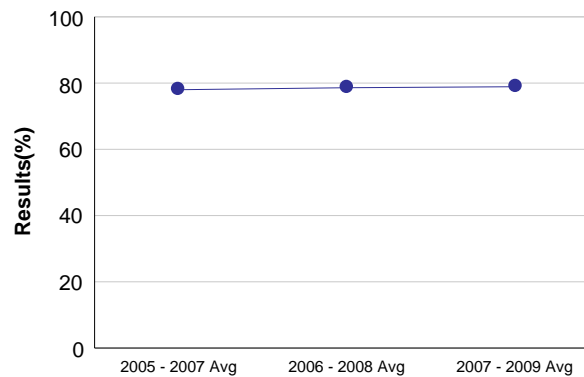
● Alberta

4 Year Completion (%)



● Alberta

5 Year Completion (%)



● Alberta

Note: Data values have been suppressed where the number of students is less than 6. Suppression is marked with an asterisk (*).

High School Completion Rates

Province: Alberta

Detail for 3 Year Rate (All Students)

	Total Students	Credentialed Completer			Non-Credentialed Completer			Total completers	Continuers	Leavers	Unadjusted Completion Rates	Estimated Attrition Factor	Completion Rates
		High School Diploma	High School Equivalency Diploma	Certificate of Achievement	Post-secondary Attendance	Apprenticeship	Academic Standing						
2005	42,952	28,784	5	302	113	114	304	29,622	9,023	4,307	69.0	1,048.2	70.7
2006	43,876	29,368	7	260	115	136	323	30,209	9,254	4,413	68.9	1,097.8	70.6
2007	44,620	30,105	6	255	133	122	327	30,948	8,899	4,773	69.4	1,119.5	71.1
2008	45,381	30,500	16	266	114	126	333	31,355	9,020	5,006	69.1	1,102.2	70.8
2009	45,286	30,689	4	305	130	97	302	31,527	8,842	4,917	69.6	1,165.0	71.5

Detail for 3 Year Rate (Mover/Non-Mover)

	Total Students	Credentialed Completer			Non-Credentialed Completer			Total Completers	Continuers	Leavers	
		High School Diploma	High School Equivalency Diploma	Certificate of Achievement	Post-secondary Attendance	Apprenticeship	Academic Standing				
2005	Mover	4,645	2,502	2	7	20	13	31	2,575	1,618	452
	Non-Mover	38,307	26,282	3	295	93	101	273	27,047	7,405	3,855
2006	Mover	4,686	2,627	3	9	16	15	19	2,689	1,533	464
	Non-Mover	39,190	26,741	4	251	99	121	304	27,520	7,721	3,949
2007	Mover	4,825	2,751	3	17	21	13	30	2,835	1,498	492
	Non-Mover	39,795	27,354	3	238	112	109	297	28,113	7,401	4,281
2008	Mover	5,050	2,789	10	12	16	15	41	2,883	1,644	523
	Non-Mover	40,331	27,711	6	254	98	111	292	28,472	7,376	4,483
2009	Mover	5,016	2,774	1	14	14	10	31	2,844	1,703	469
	Non-Mover	40,270	27,915	3	291	116	87	271	28,683	7,139	4,448

Note: Data values have been suppressed where the number of students is less than 6. Suppression is marked with an asterisk (*).

Completion Rate is adjusted for estimated attrition factor.

High School Completion Rates

Province: Alberta

Detail for 4 Year Rate (All Students)

	Total Students	Credentialed Completer			Non-Credentialed Completer			Total completers	Continuers	Leavers	Unadjusted Completion Rates	Estimated Attrition Factor	Completion Rates
		High School Diploma	High School Equivalency Diploma	Certificate of Achievement	Post-secondary Attendance	Apprenticeship	Academic Standing						
2005	43,119	30,335	32	276	458	312	143	31,556	3,206	8,357	73.2	1,029.0	75.0
2006	42,935	30,540	45	298	461	331	161	31,836	2,883	8,216	74.1	1,075.8	76.1
2007	43,856	31,185	55	246	519	368	157	32,530	2,818	8,508	74.2	1,120.7	76.1
2008	44,600	31,852	37	284	508	316	165	33,162	2,765	8,673	74.4	1,149.4	76.3
2009	45,369	32,406	51	274	522	263	173	33,689	3,000	8,680	74.3	1,119.1	76.1

Detail for 4 Year Rate (Mover/Non-Mover)

		Total Students	Credentialed Completer			Non-Credentialed Completer			Total Completers	Continuers	Leavers
			High School Diploma	High School Equivalency Diploma	Certificate of Achievement	Post-secondary Attendance	Apprenticeship	Academic Standing			
2005	Mover	5,294	2,886	15	19	65	55	15	3,055	1,096	1,143
	Non-Mover	37,825	27,449	17	257	393	257	128	28,501	2,110	7,214
2006	Mover	5,364	3,023	18	10	80	45	32	3,208	1,020	1,136
	Non-Mover	37,571	27,517	27	288	381	286	129	28,628	1,863	7,080
2007	Mover	5,500	3,181	29	13	75	54	21	3,373	985	1,142
	Non-Mover	38,356	28,004	26	233	444	314	136	29,157	1,833	7,366
2008	Mover	5,545	3,267	18	19	76	34	23	3,437	942	1,166
	Non-Mover	39,055	28,585	19	265	432	282	142	29,725	1,823	7,507
2009	Mover	5,822	3,389	23	17	67	35	33	3,564	1,043	1,215
	Non-Mover	39,547	29,017	28	257	455	228	140	30,125	1,957	7,465

Note: Data values have been suppressed where the number of students is less than 6. Suppression is marked with an asterisk (*).

Completion Rate is adjusted for estimated attrition factor.

High School Completion Rates

Province: Alberta

Detail for 5 Year Rate (All Students)

	Total Students	Credentialed Completer			Non-Credentialed Completer			Total completers	Continuers	Leavers	Unadjusted Completion Rates	Estimated Attrition Factor	Completion Rates
		High School Diploma	High School Equivalency Diploma	Certificate of Achievement	Post-secondary Attendance	Apprenticeship	Academic Standing						
2005	43,235	30,685	120	274	844	468	109	32,500	1,386	9,349	75.2	1,020.4	77.0
2006	43,098	31,010	91	275	782	591	89	32,838	1,216	9,044	76.2	1,030.8	78.1
2007	42,900	31,198	106	301	742	551	117	33,015	1,071	8,814	77.0	1,075.5	78.9
2008	43,845	31,794	118	244	789	586	99	33,630	1,131	9,084	76.7	1,123.2	78.7
2009	44,565	32,529	87	282	817	477	110	34,302	1,207	9,056	77.0	1,149.2	79.0

Detail for 5 Year Rate (Mover/Non-Mover)

		Total Students	Credentialed Completer			Non-Credentialed Completer			Total Completers	Continuers	Leavers
			High School Diploma	High School Equivalency Diploma	Certificate of Achievement	Post-secondary Attendance	Apprenticeship	Academic Standing			
2005	Mover	5,799	3,288	62	12	147	71	18	3,598	629	1,572
	Non-Mover	37,436	27,397	58	262	697	397	91	28,902	757	7,777
2006	Mover	5,594	3,133	46	20	136	100	13	3,448	570	1,576
	Non-Mover	37,504	27,877	45	255	646	491	76	29,390	646	7,468
2007	Mover	5,634	3,277	47	12	157	75	26	3,594	487	1,553
	Non-Mover	37,266	27,921	59	289	585	476	91	29,421	584	7,261
2008	Mover	5,787	3,421	62	14	144	87	17	3,745	480	1,562
	Non-Mover	38,058	28,373	56	230	645	499	82	29,885	651	7,522
2009	Mover	5,880	3,526	35	22	144	73	23	3,823	518	1,539
	Non-Mover	38,685	29,003	52	260	673	404	87	30,479	689	7,517

Note: Data values have been suppressed where the number of students is less than 6. Suppression is marked with an asterisk (*).

Completion Rate is adjusted for estimated attrition factor.