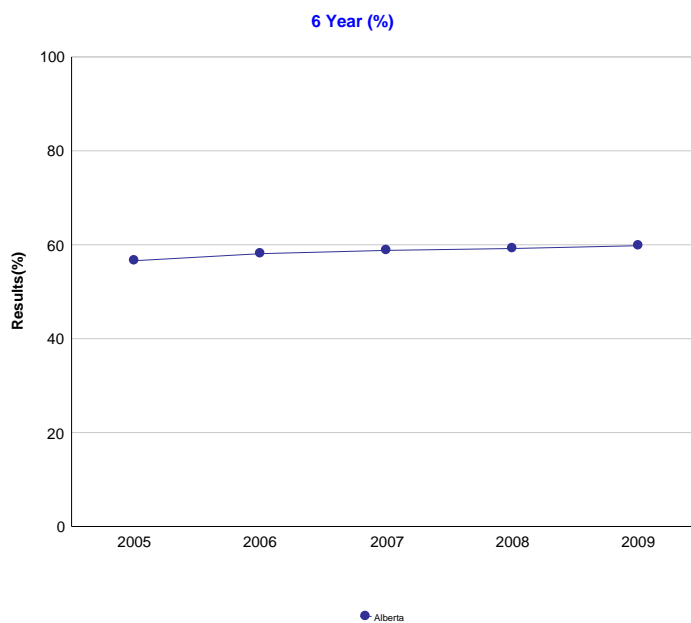
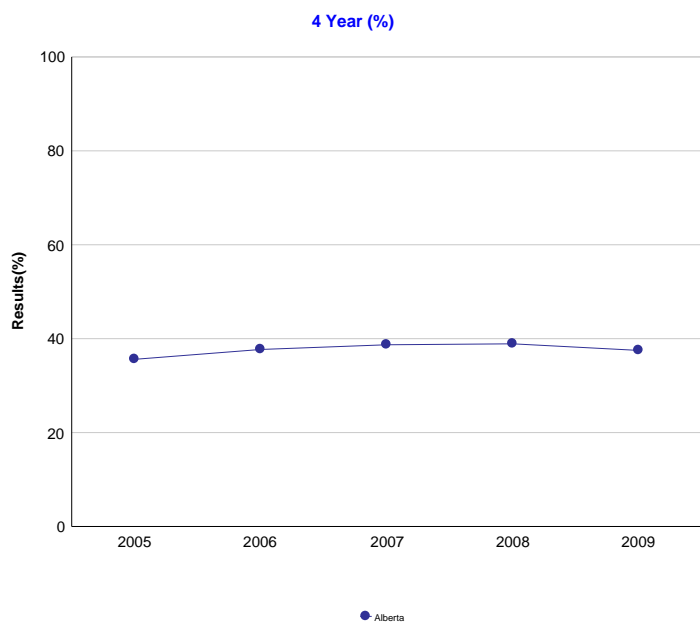


High School to Post-Secondary Transition Rates - Measure History

Province: Alberta

	Alberta									
	2005		2006		2007		2008		2009	
	N	%	N	%	N	%	N	%	N	%
4 Year	43,119	35.6	42,935	37.7	43,856	38.7	44,600	38.9	45,369	37.5
6 Year	42,524	56.6	43,218	58.1	43,077	58.8	42,875	59.2	43,827	59.8



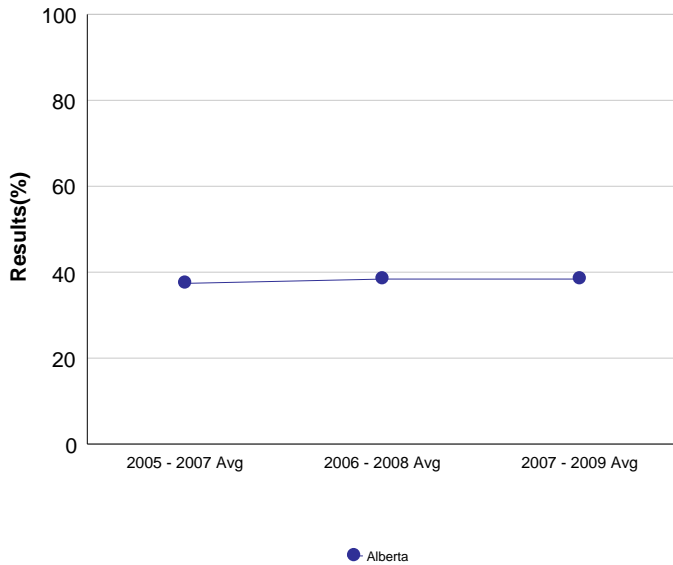
Note: Data values have been suppressed where the number of students is less than 6. Suppression is marked with an asterisk (*).

High School to Post-Secondary Transition Rates - 3 Year Rolling Average

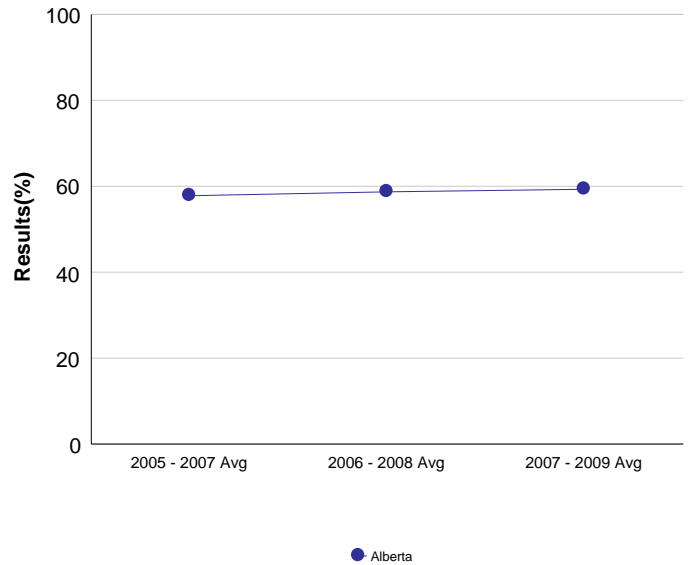
Province: Alberta

Alberta						
	2005 - 2007 Avg		2006 - 2008 Avg		2007 - 2009 Avg	
	N	%	N	%	N	%
4 Year	43,303	37.4	43,797	38.4	44,608	38.4
6 Year	42,940	57.8	43,057	58.7	43,260	59.3

4 Year (%)



6 Year (%)



Note: Data values have been suppressed where the number of students is less than 6. Suppression is marked with an asterisk (*).

High School to Post-Secondary Transition Rates

Province: Alberta

Detail for 4 Year Rate

	Total Students	Transitioners		Number of Transitioners	Unadjusted Transition Rates	Estimated Attrition Factor	Estimated Out-of-Province Post-Secondary Factor	Transition Rates
		Post-secondary	Apprenticeship					
2005	43,119	12,630	1,255	13,885	32.2	1,029.0	1,102.6	35.6
2006	42,935	12,970	1,569	14,539	33.9	1,075.8	1,256.7	37.7
2007	43,856	13,584	1,567	15,151	34.5	1,120.7	1,403.5	38.7
2008	44,600	13,918	1,527	15,445	34.6	1,149.4	1,442.0	38.9
2009	45,369	13,845	1,171	15,016	33.1	1,119.1	1,561.8	37.5

Detail for 6 Year Rate

	Total Students	Transitioners		Number of Transitioners	Unadjusted Transition Rates	Estimated Attrition Factor	Estimated Out-of-Province Post-Secondary Factor	Transition Rates
		Post-secondary	Apprenticeship					
2005	42,524	19,618	2,141	21,759	51.2	993.4	1,758.3	56.6
2006	43,218	19,896	2,708	22,604	52.3	1,019.7	1,898.5	58.1
2007	43,077	19,825	2,924	22,749	52.8	1,028.6	1,982.0	58.8
2008	42,875	19,768	2,960	22,728	53.0	1,076.3	2,013.2	59.2
2009	43,827	20,475	2,827	23,302	53.2	1,122.6	2,253.8	59.8

Note: Data values have been suppressed where the number of students is less than 6. Suppression is marked with an asterisk (*).

Transition Rate is adjusted for attrition and estimated out-of-province post-secondary factor.