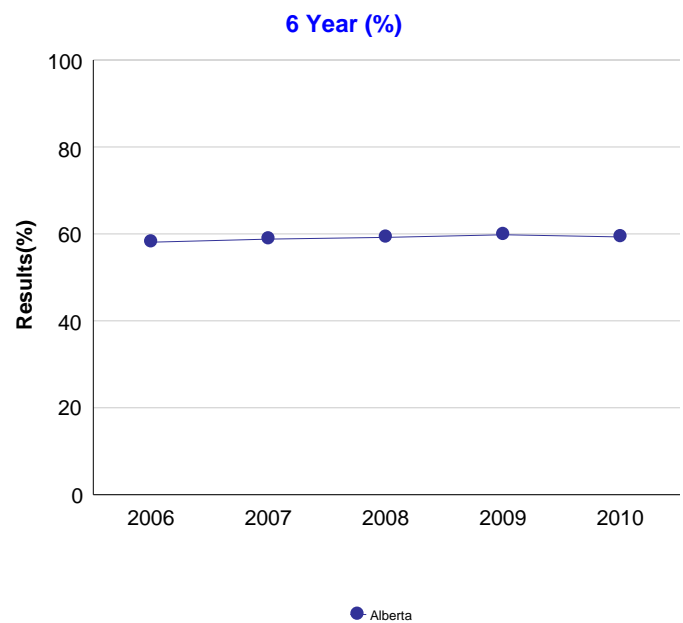
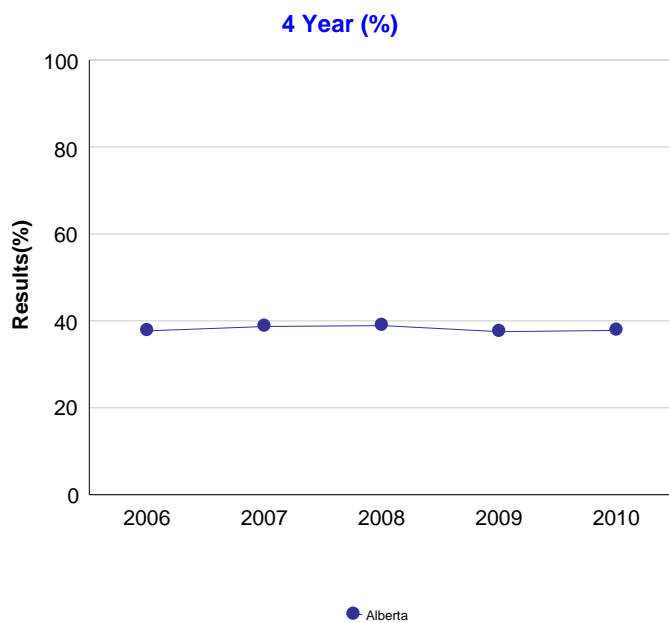


High School to Post-Secondary Transition Rates - Measure History

Province: Alberta

	Alberta									
	2006		2007		2008		2009		2010	
	N	%	N	%	N	%	N	%	N	%
4 Year	42,935	37.7	43,856	38.7	44,600	38.9	45,369	37.5	45,268	37.8
6 Year	43,218	58.1	43,077	58.8	42,875	59.2	43,827	59.8	44,547	59.3



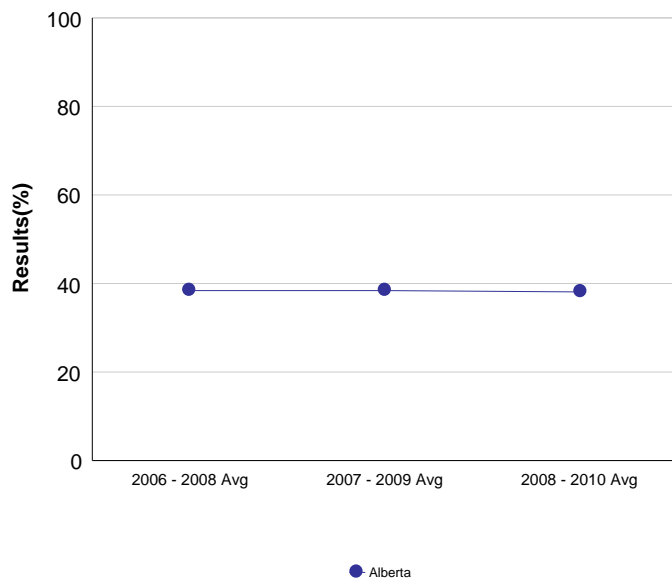
Note: Data values have been suppressed where the number of students is less than 6. Suppression is marked with an asterisk (*).

High School to Post-Secondary Transition Rates - 3 Year Rolling Average

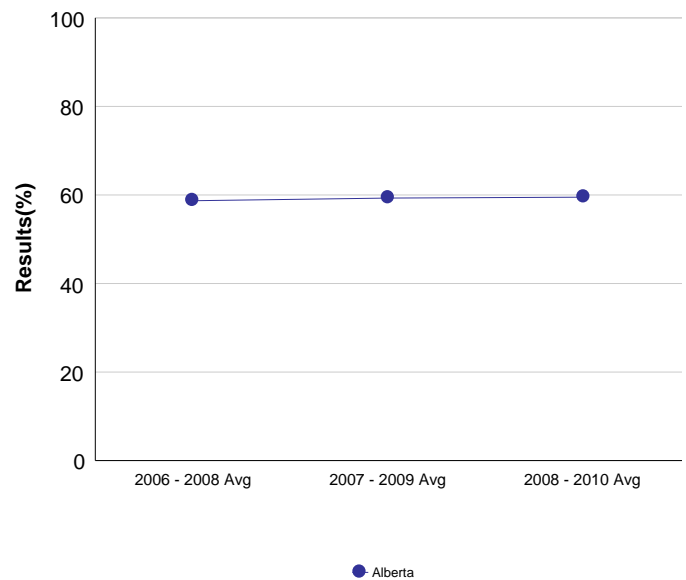
Province: Alberta

	Alberta					
	2006 - 2008 Avg		2007 - 2009 Avg		2008 - 2010 Avg	
	N	%	N	%	N	%
4 Year	43,797	38.4	44,608	38.4	45,079	38.1
6 Year	43,057	58.7	43,260	59.3	43,750	59.5

4 Year (%)



6 Year (%)



Note: Data values have been suppressed where the number of students is less than 6. Suppression is marked with an asterisk (*).

High School to Post-Secondary Transition Rates

Province: Alberta

Detail for 4 Year Rate

	Total Students	Transitioners		Number of Transitioners	Unadjusted Transition Rates	Estimated Attrition Factor	Estimated Out-of-Province Post-Secondary Factor	Transition Rates
		Post-secondary	Apprenticeship					
2006	42,935	12,970	1,569	14,539	33.9	1,075.8	1,256.7	37.7
2007	43,856	13,584	1,567	15,151	34.5	1,120.7	1,403.5	38.7
2008	44,600	13,918	1,527	15,445	34.6	1,149.4	1,442.0	38.9
2009	45,369	13,845	1,171	15,016	33.1	1,119.1	1,561.8	37.5
2010	45,268	14,261	969	15,230	33.6	1,061.6	1,494.9	37.8

Detail for 6 Year Rate

	Total Students	Transitioners		Number of Transitioners	Unadjusted Transition Rates	Estimated Attrition Factor	Estimated Out-of-Province Post-Secondary Factor	Transition Rates
		Post-secondary	Apprenticeship					
2006	43,218	19,896	2,708	22,604	52.3	1,019.7	1,898.5	58.1
2007	43,077	19,825	2,924	22,749	52.8	1,028.6	1,982.0	58.8
2008	42,875	19,768	2,960	22,728	53.0	1,076.3	2,013.2	59.2
2009	43,827	20,475	2,827	23,302	53.2	1,122.6	2,253.8	59.8
2010	44,547	20,974	2,565	23,539	52.8	1,097.3	2,235.0	59.3

Note: Data values have been suppressed where the number of students is less than 6. Suppression is marked with an asterisk (*).

Transition Rate is adjusted for attrition and estimated out-of-province post-secondary factor.